

# VISUALCOUNTER VISION-5D

CUSTOMER TRAFFIC  
MONITORING SENSOR FOR  
COMMERCIAL AREAS



***Solution for customer flow analysis in commercial areas. The most accurate (99%) and reliable people counting solution on the market***

## **LATEST GENERATION ToF (TIME-OF-FLIGHT) TECHNOLOGY**

Innovative 'Time of Flight' technology that creates a high-resolution and accurate 3D image (with no GDPR impact) based on infrared rays reflected from the surroundings

## **MAXIMUM ACCURACY WITH ARTIFICIAL VISION ALGORITHMS**

Processing algorithms based on neural networks and fuzzy logic that make it the most accurate people counting system on the market (>99%)

## **CUSTOMER SEGMENTATION AND GROUPING BEHAVIOUR**

Customer path tracking, object identification and customer segmentation by height and grouping behaviour (individuals, couples and groups/families)

## **SMARTPHONE DETECTION AND TRACKING**

Integrated module for detection and tracking of smartphones

## **WAITING IN QUEUE MANAGEMENT**

Monitoring of people in queues and their waiting time

## **IP / IoT / M2M CLOUD-NATIVE COMMUNICATIONS**

IP communications (Ethernet PoE, WiFi) and IoT/M2M native modules (LTE-M 4G / NB-IoT 4G / 5G)

## **STAFF IDENTIFICATION**

Variety of integrated technologies for the 'identification and exclusion of employees': RFID, Bluetooth, IR, Mobile app, NFC

## **EASY DATA INTEGRATION**

Flexible data integration (API, text csv, xml, JSON, web services)

## **INTERNAL STORAGE OF HISTORIC DATA**

Historic data storage up to a maximum of 400 days

## **REMOTE AND CENTRALISED CLOUD MANAGEMENT**

Remote cloud management of an unlimited network of devices



## **COMMERCIAL AREA BEHAVIOURAL ANALYTICS**

### **PEOPLE COUNTING AND CUSTOMER PATHS**

- Daily/weekly/monthly traffic paths
- Customer grouping behaviour
- Occupation of the commercial area
- Counting of people crossing and interested in the window display



### **DETECTION AND TRACKING OF SMARTPHONES**

- Rate of attraction into the shop's commercial environment
- Visits and usual paths in department areas
- Dwell time in the shop and its different departments
- Returning customer rate / loyalty
- Maps of activity and movement in the commercial area



### **WAITING IN QUEUE MANAGEMENT**

- Identification of the number of people waiting in queues
- Estimation of the average waiting time and drop-out rate



### **IDENTIFICATION OF EMPLOYEES**

- Identification or exclusion of employees
- Different integrated technologies: RFID, Bluetooth, IR, Mobile app, NFC



### **IOT - CLOUD SERVICES**

- Cloud IoT architecture and platform with possibility of predictive and big data analytics services



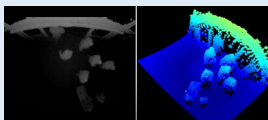
## TIME-OF-FLIGHT (ToF) TECHNOLOGY

The ToF technology allows to estimate the distances of bodies and objects obtaining a 3D image in real time with high precision and resolution



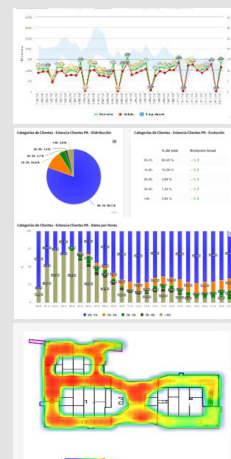
### Latest generation algorithms

Processing algorithms based on neural networks and fuzzy logic that allow accurate counting, identification and monitoring of people



## 5 Dimensions-Data

-  SMART PEOPLE COUNTING
-  SMARTPHONE DETECTION
-  QUEUE MANAGEMENT
-  EMPLOYEE IDENTIFICATION
-  IOT - CLOUD SERVICES



## TECHNICAL SPECIFICATIONS

Model	VC.VISION.5D (PoE / WiFi / Track / 4G / IoT-NB / 5G)
Sensor technology	ToF - Time of Flight
Processor / Operating System	ARM Cortex-A8 / Linux
Communications	IP (Compatible protocols: IPv4, TCP, UDP, DHCP, SNMP, SFTP, SSH, HTTPS) <ul style="list-style-type: none"> <li>Ethernet</li> <li>WiFi (802.11 b/g/n)</li> <li>LTE-M 4G / NB-IoT 4G / 5G</li> </ul>
Voltage / Power consumption	<ul style="list-style-type: none"> <li>12 VCC/700 mA (9 Wmax.)</li> <li>PoE (Power Over Ethernet) - IEEE 802.3af Compatible</li> </ul>
Connections	<ul style="list-style-type: none"> <li>RJ-45 (Network/PoE)</li> <li>Jack (Power)</li> <li>2 x USB 2.0</li> <li>10 pin connector: UART / Ext. Power 5V / Digital I-O</li> <li>SMA connector for external antenna LTE-M 4G / NB-IoT 4G / 5G</li> </ul>
Internal memory	Internal RAM/Flash
WIFI Scanner Module	<ul style="list-style-type: none"> <li>IEEE 802.11 b/g Standard:</li> <li>WEP, WPA-PSK security</li> <li>Integrated Antenna / Gain: 5 dBi Omnidirectional</li> </ul>
Dimensions / Weight	40 x 151 x 94 mm / 750 g
Environmental parameters	<ul style="list-style-type: none"> <li>ROHS</li> <li>Range of ambient operating temperature -25°C / +70°C</li> <li>Relative humidity 5% / 95% (without condensation)</li> </ul>

## VISUALCOUNTER AROUND THE WORLD

- More than 40.000 counting devices installed
- Present in 80 countries on all five continents
- Reference customers in each market niche
- Solutions tailored to each country and sector
- Developing, manufacturing and marketing own people counting solutions



**VISUALCOUNTER**

C/ Julián Camarillo 53, Pl 3, Of 4  
28037 - Madrid (SPAIN)



info@visualcounter.com.es  
(+34) 91 375 06 95

